

Buying a recorded Dorset



Why invest in Signet-recorded rams?

Investing in rams with superior genetics can be worth an extra £800 over their lifetime.

With potential gains of £4 per lamb, commercial producers should source Signet-recorded rams with high estimated breeding values (EBVs) for traits of importance to their flock.

Interpreting EBVs when buying a ram

EBVs are presented on sale cards, breeding charts and published in ram sale catalogues; as well as being displayed online at www.signetdata.com

Accuracy values indicate how much is known about an animal for a specific trait and the degree to which EBVs might change over time.

Table 1. Dorset breed benchmark for 2022

Estimated breeding value	Average	Top 25%	Top 10%
8-week weight	1.16	1.78	2.34
Litter size	0.02	0.05	0.08
Maternal ability	0.29	0.59	0.85
Scan weight	3.08	4.73	6.21
Muscle depth	0.75	1.33	1.85
Fat depth	-0.07	0.16	0.37
Lean weight	0.10	0.17	0.24
Fat weight	-0.08	0.08	0.23
Gigot	0.02	0.03	0.05
Terminal sire index	175	209	241
Maternal index	170	204	234



Breeding charts

Breeding charts are more informative, showing where a ram's genetic potential sits within the breed for a range of traits.

The centre line indicates the average for that breed. Bars to the right of the centre indicate above-average breeding values, meaning progeny are likely to have faster growth rates, more muscling and be fatter. Bars to the left indicate a below-average value for those traits and leaner progeny.

National Terminal Sire Evaluation

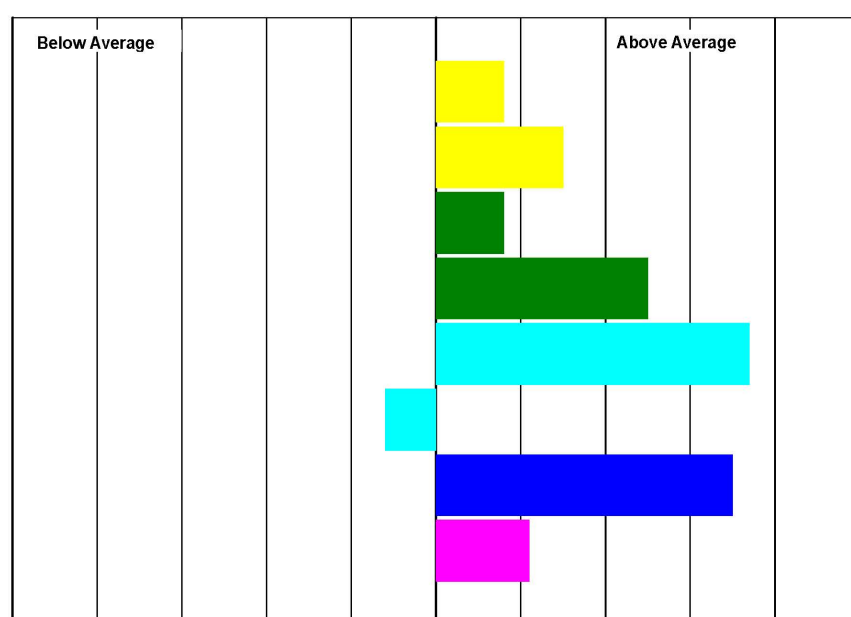
Lot: EXAMPLE STONELEIGH BOB AB:210001

Sire: XY:190032

Dam: AB:190034

Ultrasound Scanned: Yes

Date of Birth 01/01/20121



BLUP RUN DATE: 24/07/2021

Produced by Signet Breeding Services

Stoneleigh Park, Kenilworth, Warwickshire, CV8 2TL Tel: 0247 647 8829

Signet 
BREEDING SERVICES

Produced for you by:

AHDB
Signet Breeding Services
Stoneleigh Park
Kenilworth
Warwickshire
CV8 2TL

T 024 7647 8829
E signet@ahdb.org.uk
W signetdata.com

While the Agriculture and Horticulture Development Board seeks to ensure that the information contained within this document is accurate at the time of printing, no warranty is given in respect thereof and, to the maximum extent permitted by law, the Agriculture and Horticulture Development Board accepts no liability for loss, damage or injury howsoever caused (including that caused by negligence) or suffered directly or indirectly in relation to information and opinions contained in or omitted from this document.

©Agriculture and Horticulture Development Board 2022.
All rights reserved.

If you no longer wish to receive this information,
please email us on comms@ahdb.org.uk

AHDB
